

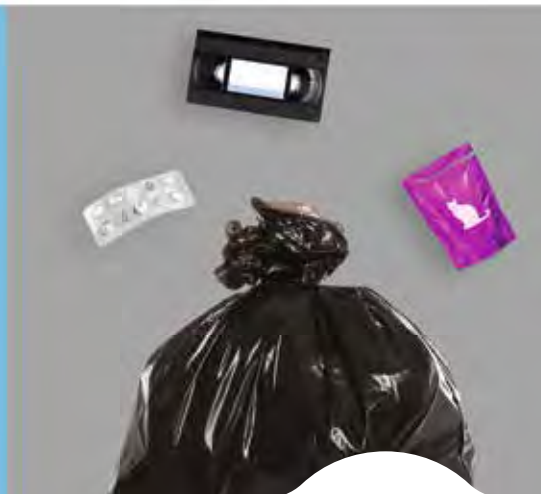


CALENDAR

2024

DOOR-TO-DOOR HOUSEHOLD
WASTE COLLECTION
Brugelette

**PLEASE NOTE
major changes!**



Together good sorting, better recycling



Bruglette Municipality

Important information: Door-to-door waste collections start **at 6 a.m.** Please put the bags out the evening **before 6 p.m.**

On **public holidays**, make sure you check your calendar. Collections may be cancelled **in the event of bad weather.**

Door-to-door collections are reserved for normal household activity waste.



Plastic, metal and composite waste (PMC):
collection every **2 weeks**



Ordures ménagères :
collection every 2 weeks

Please note that waste collection days have changed!

If the bag collection date falls on a bank holiday, the collection will take place the next working day.



Paper/cardboard:
collection every **4 weeks**



REMINDER:

Bag weight: 15 kg maximum.

- Statutory communal bag
- No glass
- No sharp objects
- No broken bags
- No electrical & electronic waste
- No hazardous waste

} Recycling centre

January		February		March		April		May		June	
1M	New Year's Day	1T		1F		1M	Easter Monday	1W	May Day	1S	
2T		2F		2S		2T		2T		2S	
3W		3S		3S		3W		3F		3M	
4T		4S		4M		4T		4S		4T	
5F		5M		5T		5F		5S		5W	
6S		6T		6W		6S		6M		6T	
7S		7W		7T		7S		7T		7F	
8M		8T		8F		8M		8W		8S	
9T		9F		9S		9T		9T	Ascension Day	9S	
10W		10S		10S		10W		10F		10M	
11T		11S		11M		11T		11S		11T	
12F		12M		12T		12F		12S		12W	
13S		13T		13W		13S		13M		13T	
14S		14W		14T		14S		14T		14F	
15M		15T		15F		15M		15W		15S	
16T		16F		16S		16T		16T		16S	
17W		17S		17S		17W		17F		17M	
18T		18S		18M		18T		18S		18T	
19F		19M		19T		19F		19S	Whitsun	19W	
20S		20T		20W		20S		20M	Whit Monday	20T	
21S		21W		21T		21S		21T		21F	
22M		22T		22F		22M		22W		22S	
23T		23F		23S		23T		23T		23S	
24W		24S		24S		24W		24F		24M	
25T		25S		25M		25T		25S		25T	
26F		26M		26T		26F		26S		26W	
27S		27T		27W		27S		27M		27T	

28S	
29M	
30T	
31W	

28W	
29T	

28T	
29F	
30S	
31S	

28S	
29M	
30T	

28T	
29W	
30T	
31F	

28F	
29S	
30S	

July	
1M	
2T	
3W	
4T	
5F	
6S	
7S	
8M	
9T	
10W	
11T	
12F	
13S	
14S	
15M	
16T	
17W	
18T	
19F	
20S	
21S	Belgian National Day
22M	
23T	
24W	
25T	
26F	
27S	
28S	
29M	
30T	
31W	

August	
1T	
2F	
3S	
4S	
5M	
6T	
7W	
8T	
9F	
10S	
11S	
12M	
13T	
14W	
15T	Assumption of the Virgin Mary
16F	
17S	
18S	
19M	
20T	
21W	
22T	
23F	
24S	
25S	
26M	
27T	
28W	
29T	
30F	
31S	

September	
1S	
2M	
3T	
4W	
5T	
6F	
7S	
8S	
9M	
10T	
11W	
12T	
13F	
14S	
15S	
16M	
17T	
18W	
19T	
20F	
21S	
22S	
23M	
24T	
25W	
26T	
27F	
28S	
29S	
30M	

October	
1T	
2W	
3T	
4F	
5S	
6S	
7M	
8T	
9W	
10T	
11F	
12S	
13S	
14M	
15T	
16W	
17T	
18F	
19S	
20S	
21M	
22T	
23W	
24T	
25F	
26S	
27S	
28M	
29T	
30W	
31T	

November	
1F	All Saints' Day
2S	
3S	
4M	
5T	
6W	
7T	
8F	
9S	
10S	
11M	Armistice Day
12T	
13W	
14T	
15F	
16S	
17S	
18M	
19T	
20W	
21T	
22F	
23S	
24S	
25M	
26T	
27W	
28T	
29F	
30S	

December	
1S	
2M	
3T	
4W	
5T	
6F	
7S	
8S	
9M	
10T	
11W	
12T	
13F	
14S	
15S	
16M	
17T	
18W	
19T	
20F	
21S	
22S	
23M	
24T	
25W	Christmas Day
26T	
27F	
28S	
29S	
30M	
31T	

 PMC
  Paper/Cardboard
  Household waste

Disposal at recycling centres:

 Bicycles: 20 april (3rd saturday)
 Toys: 19 october (3rd saturday)


The Big Spring Clean
 on **21, 22, 23 and 24 March 2024**
 Find out about this project and many more at www.walloniepluspropre.be



Sort your colourless glass bottles and jars in a jiffy!



Colourless glass

Coloured glass

PLEASE dispose of these in a bottle bank or at a recycling centre

Comments:



Separate colourless glass from coloured glass.
Empty properly.



No tops or caps.
Don't leave anything lying around the bottle banks!
Dumping is subject to sanctions.

AVOID THE MOST COMMON ERRORS



High-temperature resistant glass (oven dishes)



Opaline and crystal



Flat glass such as window panes and mirrors



Porcelain, ceramic



Terracotta



Light bulbs



What does the Green Dot logo mean? The Green Dot logo on packaging indicates that the company that places the product on the market contributes to the financing of the selective collection, sorting and recycling of household packaging. It says nothing about the recyclability of the product or its packaging and it is not a sorting rule.



Sort your paper and cardboard in a jiffy!



Door-to-door collection or at recycling centres

Comments:



Remove the plastic film from publications.
Put your paper and cardboard in cardboard boxes, tightly closed and weighing no more than 15 kg.

AVOID THE MOST COMMON ERRORS



Dirty or greasy paper and cardboard trays



Photos



Rolls of wallpaper



Tissues, paper towels, and aluminium



Bin bag (non-recyclable waste)



PMC, what you can sort.



SORTING IS EVERYWHERE.
NOT JUST AT HOME!



PLASTIC PACKAGING



Bottles



Bottles

Trays, tubs and dishes/punnets



Pots and tubes

Films



Beverage capsules



Bags and sachets



METALLIC PACKAGING



Cans and tins



Aerosols



Trays and dishes



Beverage capsules



Lids, caps and bottle tops

Good recycling rules



Drain and empty all packaging properly.



Flatten plastic bottles, replace the cap.



Remove the plastic film from the tray and discard them separately in the bag.



Remove the plastic film that covers the entire bottle and dispose of it separately in the blue bag.



DRINK CARTONS



WHAT IS PROHIBITED IN PMCS

✗ Packaging with childproof caps



✗ Expanded polystyrene



✗ Packaging with at least one of the following symbols



✗ Packaging made of a combination of materials (e.g. plastic film layer + aluminium film layer) which cannot be separated, like some drink, fruit purée or wet pet food pouches, etc.



✗ Gas cylinders, batteries and electronic devices/ electrical appliances



✗ Motor oil and lubricant packaging, fuels, pesticides, glue, paints and varnishes, silicone tubes

✗ Other objects



✗ Packaging holding more than 8 L

CAUTION!



Do not put any packaging inside other packaging and do not group it together in tied up bags (leave it loose in the bag).



Don't attach anything to the outside of the bag.



Opening hours and addresses of your recycling centres

ADDRESSES:

CHIÈVRES	Rue de Leuze (Tongre N/D)	T 068 65 86 92
ATH	Rue du Contournement d'Ath, 20	T 0479 88 64 26
SILLY	Chemin Dugnolle	T 068 55 22 50

The regulations for using recycling centres and the list of acceptable waste are available in English on www.ipalle.be > Les déchets > Les recyparcs > Règlement

The waste collection calendar for 2024 is also available in English on www.ipalle.be > Les déchets > Les collectes en porte-à-porte > Calendriers

OPENING HOURS:

Monday	Closed	12.30 p.m. to 7 p.m.
Tuesday	8.30 a.m. to 12 p.m.	12.30 p.m. to 7 p.m.
Wednesday	8.30 a.m. to 12 p.m.	12.30 p.m. to 7 p.m.
Thursday	8.30 a.m. to 12 p.m.	12.30 p.m. to 7 p.m.
Friday	8.30 a.m. to 12 p.m.	12.30 p.m. to 7 p.m.
Saturday	8.30 a.m. to 12 p.m.	1 p.m. to 7 p.m.
Sunday	8.30 a.m. to 12.30 p.m.	Closed

 In November, December, January and February, the recycling centres close at 6 p.m.

 Please arrive at the latest 15 minutes before closing time.

Days closed: 1 January, 2 January, 1 April, 1 May, 9 May, 20 May, 21 July, 15 August, 27 September, 1 November, 2 November, 11 November, 25 December and 26 December.



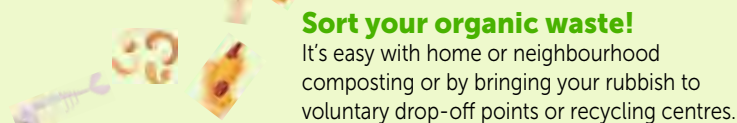
Download the Recycle! app for free

for everything you need to know about waste collection.



Information on sorting and recycling: www.fostplus.be or www.trionsmieux.be

COMPULSORY AS FROM 01/01/2024



Sort your organic waste!

It's easy with home or neighbourhood composting or by bringing your rubbish to voluntary drop-off points or recycling centres.



Voluntary drop-off points

Certain municipalities have free drop-off points.

To find out where these drop-off points are located and what waste can be collected there, please visit ipalle.be.



Need a helping hand to reduce your waste? Go to www.ipalle.be



The Ressourceseries Le Carré (www.recasbl.be) and La Poudrière (www.lapoudriere.org) sell second-hand furniture, objects, clothing, etc. Our partners can also come to your home, free of charge, to collect your reusable household goods.

For more information on selective waste collection:

contact Ipalle on **069 88 40 70**

or your local authority on **068 45 73 07** or **068 45 73 38**

or visit www.ipalle.be



Go to ipalle.be to download the recycling centres guide and to subscribe to our newsletter LE PRINCIPALLE.