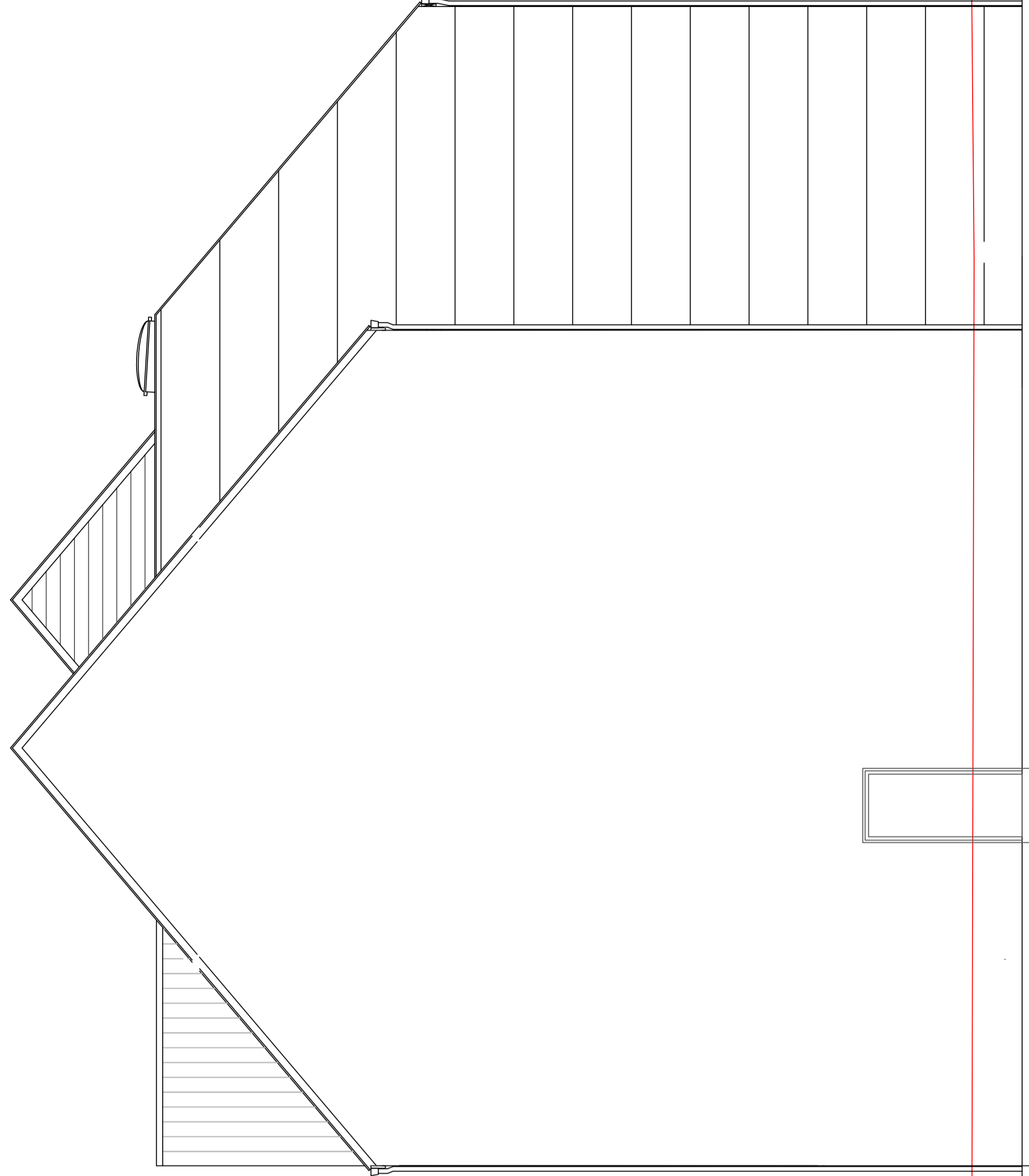
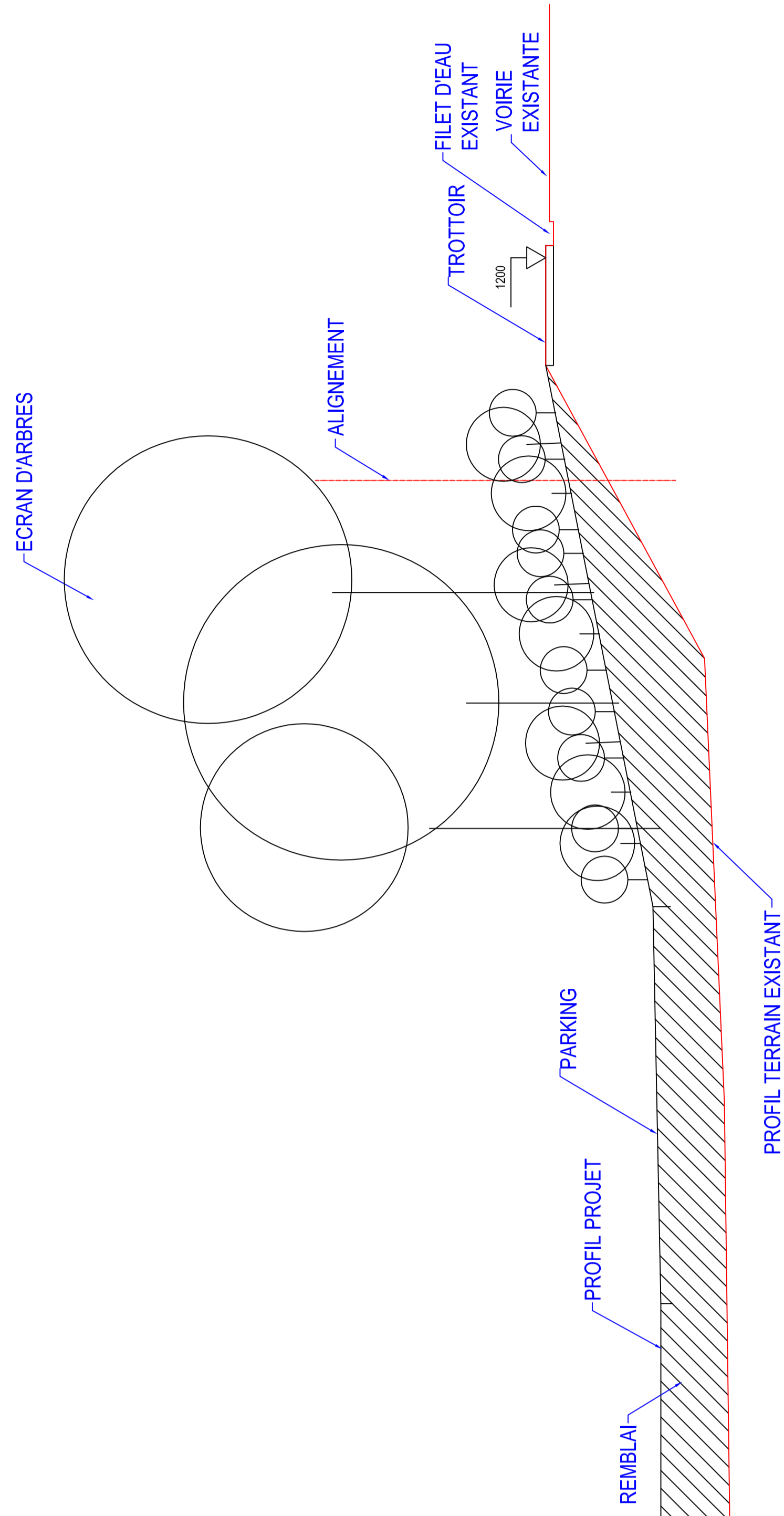
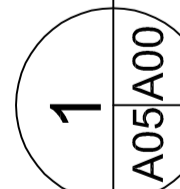


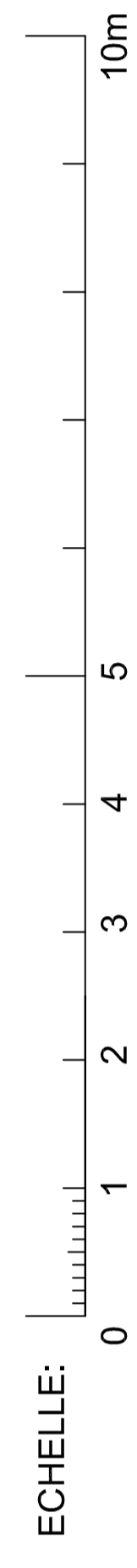
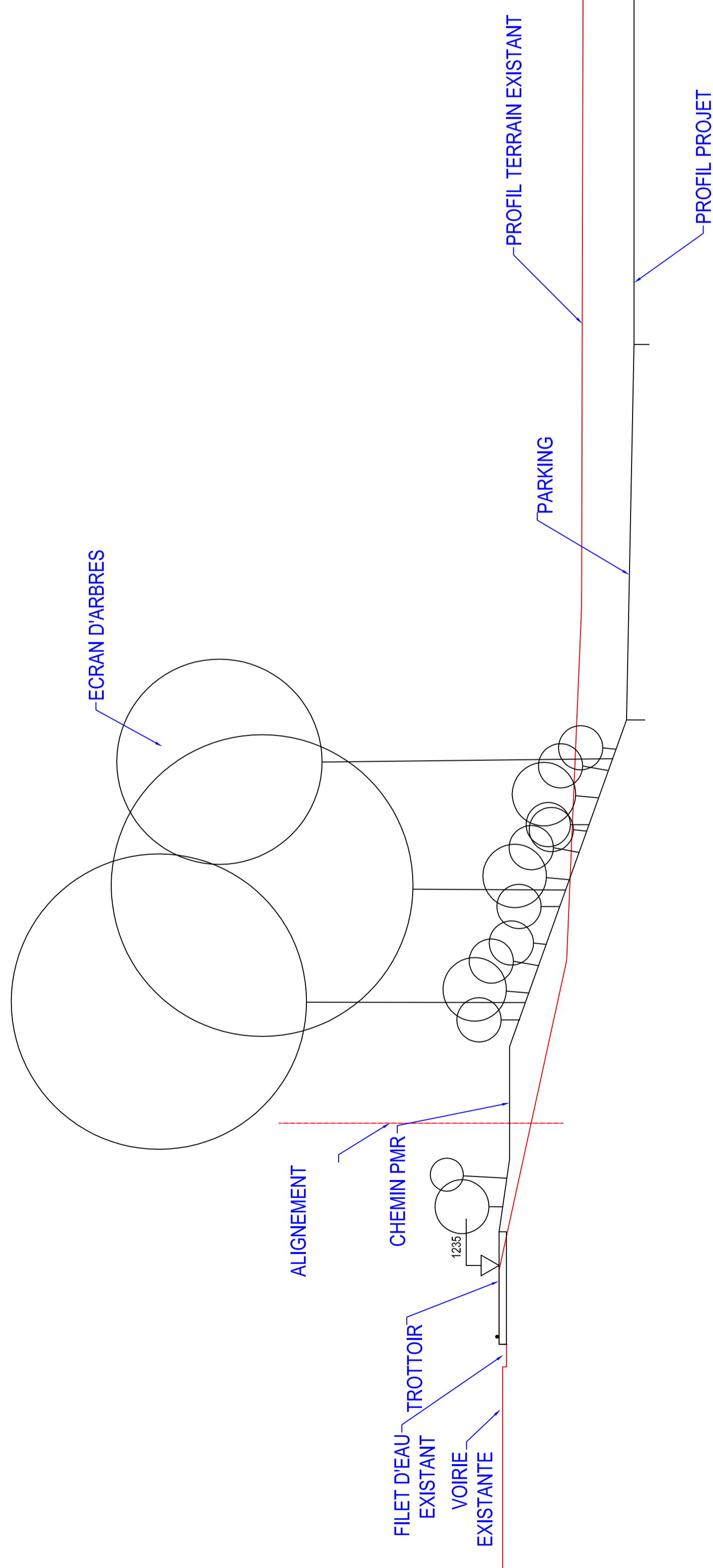
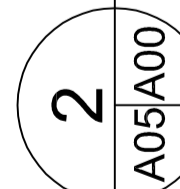
1 FACADE GAUCHE APPARTEMENTS

ECHELLE: 2/100



2 FACADE DROITE APPARTEMENTS

ECHELLE: 2/100



Reu du charrier: Avenue St. Marin
75009 Paris
cadastre sect.: B 254 d

maître de l'ouvrage:
C. Cougny de Gages
75008 Paris

A05/A00
A05

projet: CONSTRUCTION DE 12 APPARTEMENTS ET DE 4 HABITATIONS
Facades pignons appartements et coupes terrain
plan:

avant projet
permis de bâtir
plan d'exécution

CHARLES COUGNY ARCHITECTE
20 rue de Valenciennes
75005 Paris
01 47 70 10 10
www.charlescougny.com